

TK-1021 FIREWATER TANK	
DP= ATM	DT= 50 C
CAPACITY: 5000 m ³	
23.53 (DIAM) x 11.7 (H)	
EPOXI COATED	

TK-1022 FIREWATER TANK	
DP= ATM	DT= 50 C
CAPACITY: 5000 m ³	
23.53 (DIAM) x 11.7 (H)	
EPOXI COATED	

P-1015/PF-1015 FIRE WATER PUMP (DIESEL ENGINE)	
CAPACITY: 850m ³ /h	DRIV=536 kW
DIFF. PRESS: 13 barg	
DP=24 barg	
DT = 55 C	

P-1014 A/B FIRE WATER PUMP (ELECTRIC)	
CAPACITY: 510 m ³ /h	
DIFF. PRESS: 13 barg	
DP= 24 barg	

P-1025 A/B JOCKEY PUMPS	
CAPACITY: 15m ³ /h	
DIFF. PRESS: 3.5 barg	

- IN NON FIRE CONDITION JOCKEY PUMPS MAINTAIN THE PRESSURE IN THE FIREWATER NETWORK IN 3 BARG.

⊖ WHEN THE PRESSURE FALLS BELOW 2 BAR OR ON MANUAL ACTIVATION, A PULSE SIGNAL FOR FIRST PUMP STARTUP AND JOCKEY PUMP SHUTDOWN IS GENERATED.

- IF AFTER 20 SECONDS THE PRESSURE IS BELOW 6.5 BAR, ANOTHER SIGNAL FOR SECOND PUMP START UP IS GENERATED.

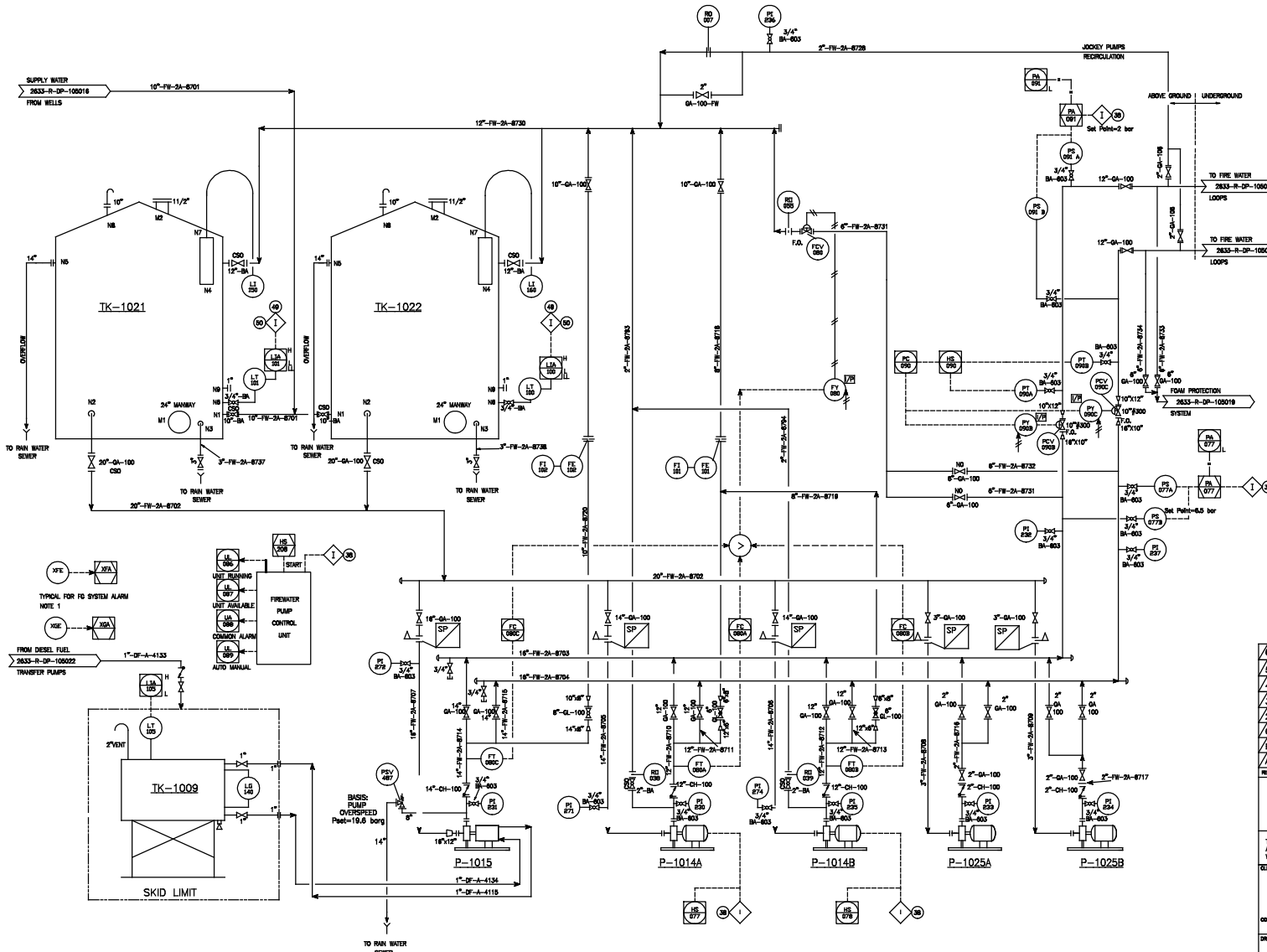
- IF AFTER ANOTHER 20 SECONDS THE PRESSURE IS STILL BELOW 6.5 BAR, ANOTHER SIGNAL FOR THIRD PUMP START UP IS GENERATED.

TWO ELECTRIC PUMPS WORKING TOGETHER OR THE DIESEL PUMP WORKING ALONE ARE ABLE TO HANDLE THE MAXIMUM WATER DEMAND.

- ⊕ START MAKE UP PUMPS
- ⊖ STOP MAKE UP PUMPS

NOTES:
1- ALARMS FOR FGS SYSTEM.

TAG	DESCRIPTION
XFE 011	TK 1001 SEAL RING FIRE
XFE 012	TK 1002 SEAL RING FIRE
XFE 013	TK 1003 SEAL RING FIRE
XFE 014	TK 1004 SEAL RING FIRE
XFE 015	TK 1005 SEAL RING FIRE
XGE 001	SUMP TANK SUMP EXPLOSIVE ATMOSPHERE
XGE 002	OIL RECEIVER SUMP EXPLOSIVE ATMOSPHERE
XFS 010	FIELD EMERGENCY BUTTONS



AS-BUILT

AS-BUILT GENERAL REVISION	22.JUN.00	FBA	FBA	ALP
AS-BUILT	27.NOV.99	FBA	FBA	ALP
INDICATED MODIFICATIONS	17.JUL.99	TED	JAC	ALP
INDICATED MODIFICATIONS	30.MAY.99	RFB	ADA	JPC
INDICATED MODIFICATIONS	26.JAN.99	GEM	ADA	CAO
FOR CONSTRUCTION	28.AUG.88	GEM	ADA	CAO
ISSUED FOR APPROVAL	10.JUL.88	GEM	LHE	CAO
ISSUED FOR APPROVAL	31.MAR.86	DED	LHE	JPC

TECHINT COMPANIA TECNICA INTERNACIONAL
 MUGLAD BASIN OIL DEVELOPMENT PROJECT - REPUBLIC OF SUDAN
 EPC III : MARINE TERMINAL FACILITIES

2633-R-DP-105018
 SCALE: NONE JOB: TENCOC-886

Greater Nile Petroleum Operating Company
 (A CNPC/PCOSB/SPC/SUDAPET Joint Venture Company)

PORT SUDAN MARINE TERMINAL PIPING & INSTRUMENTATION DIAGRAM FIRE PROTECTION PUMPS			
NONE	2633	MBOD/DS/04/97	MTF-17009-MFD-5518
SCALE	AREA	CONTRACT N°	CLIENT DRAWING N°